

# ADVANCED MACHINING SERVICES



## PROTOTYPE ~ DESIGN CNC MACHINING & MANUFACTURING

Advanced Machining Services' capabilities extend beyond just machining, in that they offer technical support and insight on how to improve component designs.



## VALUE THROUGH INNOVATION!

AMS works hard to learn as much as we can about each of the industries we serve. We learn about specific quality and documentation requirements, as well as cosmetic concerns. We work with our clients to create specific workmanship standards, special processes and documentation templates for their specific industry. By understanding the clients needs, we are able to confidently respond to new customers that have similar requirements.

- Shorter Product Development Cycle
- Unit Price Reduction
- Shortened Lead Times
- Improved Product Performance
- Simplified Manufacturability
- Repeatable Quality



### AMS EXCELS AT SEVERAL CORE COMPETENCIES:

#### Complex Part Machining

- Surfacing Models
- Multi Axis
- Small Hole Drilling
- Tight Tolerance .0001
- Gang Fixturing for Production

#### Machining

- Aluminum
- Plastic, Titanium
- Glass Filled Nylon

#### Industries

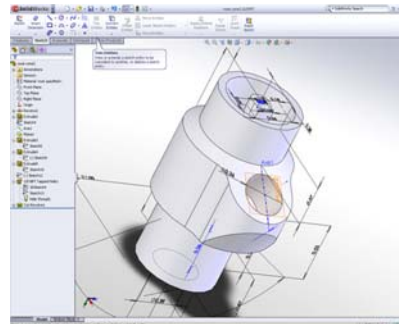
- Aerospace
- Medical Device
- Dental
- Automotive
- Artillery
- Marine
- Archery

## CONCEPT: SKETCH IDEAS

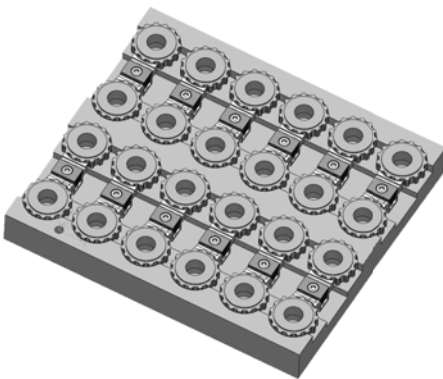


- Intuitive Design and Manufacturing
- Prototype Manufacturing
- Production Runs
- Solid Modeling
- Full 3d Concepts
- Intuitive Fixturing
- Simplistic Design for Manufacturing

## DESIGN: FROM SKETCH TO A SOLID MODEL



## MANUFACTURING:

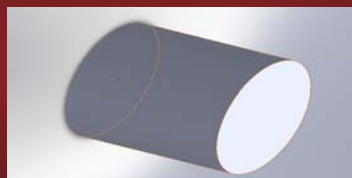


- From a Solid Model to Machine Work
- From Prototype to Production

## CAPACITIES:



Height 20"  
Width 20"  
Length 50+"



Height 10" dia  
Length 12"  
Bar Feed of 2.5" dia

## Equipment List

- Okuma 2004 Vertical Machining Center 30 x 16
- Akira Seiki 2004 Vertical Machining Center 32 x 20
- Haas H VF4 50" x 20"
- Mori Seiki 2005 CNC NL2000 Combination Milling & Turning Center
- Haas SL-20 CNC Turning Center - 10" x 20"
- Bridgeport Vertical Manual Mill w/ Digital Readout
- Engine Lathe - 14" x 40" w/ Digital Readout
- **Inspection Equipment**
- CMM Tesa Micro-hite 3D
- Tesa Hite 600D 24" Electronic Height Gage
- Starrett Quadra Check Optical Comparator
- Gage Pins - .011" - .750"
- Gage Blocks - 81 pc set
- Micrometers to 18"
- Surface Plate - 36" x 48"
- Mitutoyo SurfTest Profilometer

## CAD/CAM Software Used

- Solid Works 2009
- Master Cam x3 Level 3 with solids



## Services

- Complete Machining services
- Proto type Manufacturing
- Solid 3d Model Design
- Solid 3d Vacuum form molds and plugs
- Model Making
- 4 axis and 3d Surfacing
- Reverse Engineering
- ISO Compliant

## Materials

- Stainless Steel
- Aluminum
- Plastics
- Glass Filled Nylon
- Titanium
- Ultem

## Industries

- Medical
- Aerospace
- Automotive
- Archery
- Artillery
- Semi-con
- Audio